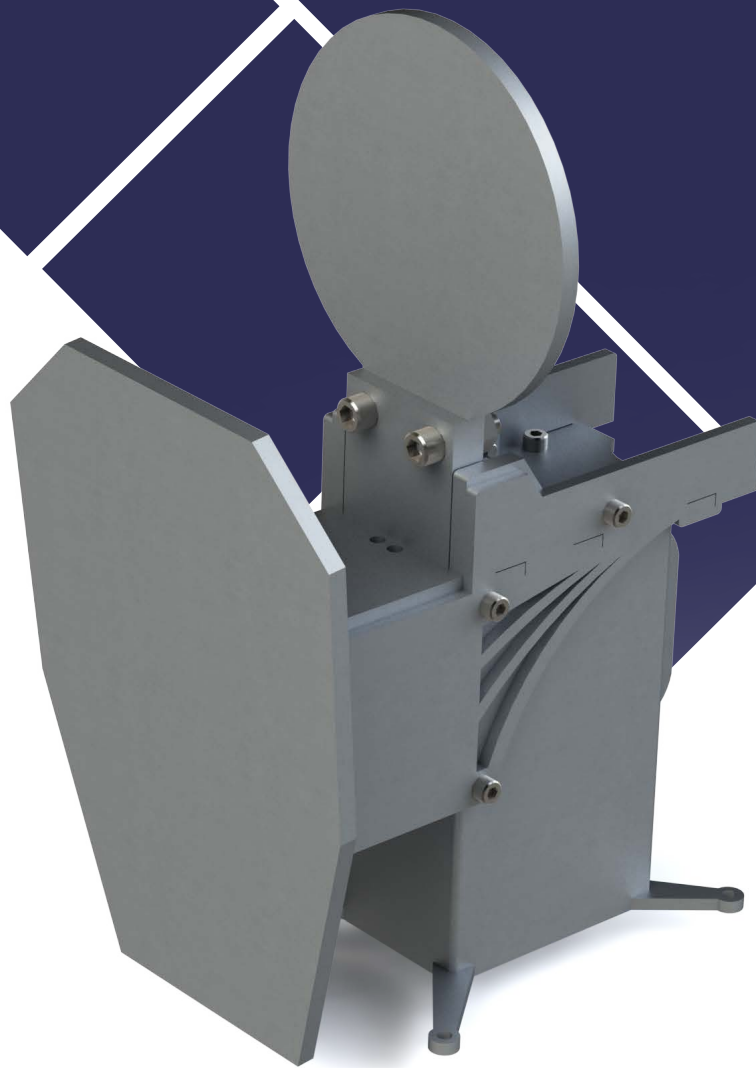
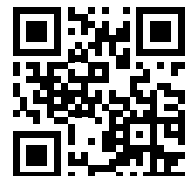


ELECTRICALLY DRIVEN PORTABLE STEEL TARGET SYSTEM



The portable system of electrically-powered steel targets is an autonomous set of targets that can be placed any time in any place. It is perfect solution to conduct wide spectrum of trainings, especially dynamic shooting. System allows to verify shooter's skills very quickly, as well as improve his motor skills.

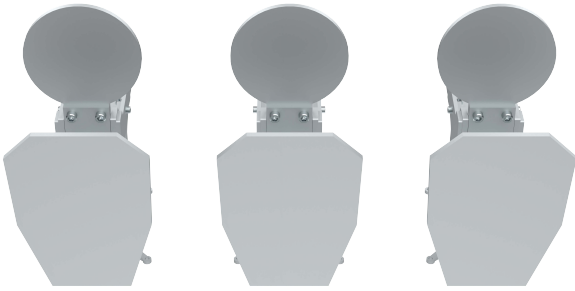


Electrically driven portable steel target system

Radio control allows to control all targets at once, group of targets or each target separately. In automatic mode, the system allows you to specify the time after which the hit „head” is automatically lifted, while in manual mode it is possible to lift it using the remote control.

The „head” moves in a range of 90 degrees. During night shooting, it is possible to equip system with automatically lighting of the raised „head” in visible or night-vision mode.

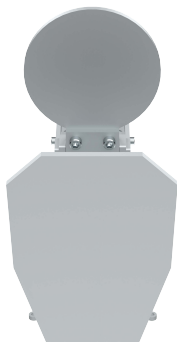
The electrically-powered targets use battery to work, which makes them completely mobile. The battery can be easily dismantled, charged and installed on a target.



It is possible to extend the range of target control and use a target base on different heights. The device is distinguished by simplicity of use and great possibilities in the preparation of the target field due to the low weight and dimensions of the device.

The kit includes

- 7 steel targets.
- Power supply battery.
- Battery charger.
- Wireless remote control.
- Target lighting.



Product features

- The electric drive of the targets enables their wireless use.
- Possibility of any arrangement of targets allows to regularly create new shooting scenarios in a very short time.
- Size and weight of the targets allows to carry them freely by anyone.
- Battery life allows you to lift the „head” of the target on a single charge a minimum of 4000 times.
- Due to the use of extremely durable materials, in particular AR500 or AR550 steel (Hardstal), using 5,56 mm caliber, M855 one target can withstand over 5000 shots.
- Easy disassembly of the product components allows for quick replacement by anyone.
- Thanks to high flexibility in introducing various functionalities, it is possible to adapt the system to the customer's needs, for example, by adding a night vision module.

Main technical parameters of the system

- Made of high quality steel AR500 or AR550 (Hardstal).
- Supply voltage: 18V.
- Number of „head” risings of one target on one battery charge: min. 4000 times.
- Maximum „head” lifting time: 0.5 s.
- Temperature range: -20 ÷ +40°C.
- Control range: 200 m.
- Total weight of one target: 20kg ±1kg; 7.
- Dimensions:
 - in raised „head” = 42cm.
 - in lowered „head” = 26cm.

