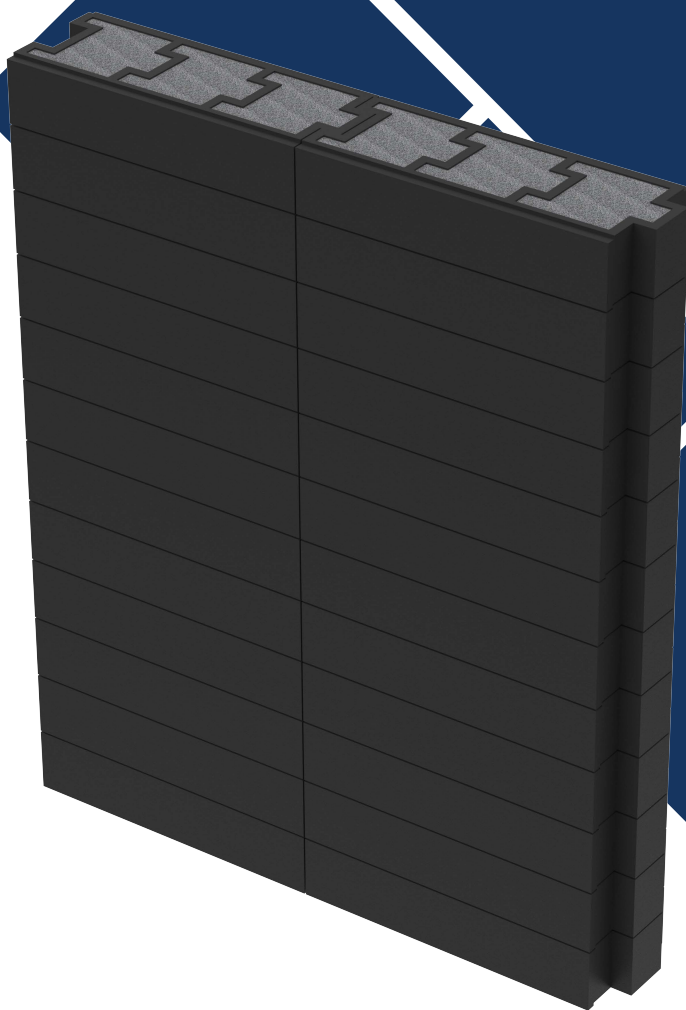


BALLISTIC BLOCKS



GISS ballistic blocks are a product that can be used as a coating for all kinds of walls, partitions, bullet traps or can be a stand-alone, independent structure. Its key purpose is to prevent ricochets, thus ensuring the safety of facility users. It absorbs all projectile energy and eliminates dangerous ricochets for shooters. Ballistic blocks stop the projectile inside the material for this purpose.



Product features

- They are made in one piece from the following products:
 - SBR/EPDM granulate/coat
- They can be made in black colour
- The blocks should be jointed in tongue and groove method to form one wall, up to a height of 2500mm. This type of joint prevents bullets from passing through the wall, and ricochets from escaping at the joint.
- Hole diameter after bullet penetration <8% of bullet diameter
- The blocks are prepared to fire ammunition from 9mm Parabellum to 7.62 x 39mm R.
- Bullet protection: min. 12,480 shots/m² when firing all types of bullets
- The strength of the wall at a horizontal joint between blocks is min. 20 shots 5.56 x 45 mm and 20 shots 7.62 x 39 mm at one point
- The strength of the wall at the vertical joint of the blocks is min. 20 shots of 5.56 x 45 mm and 20 shots of 7.62 x 39 mm at one point
- Ballistic filling: mineral aggregate fraction 2-5mm and hardness min. 8 on the Mohs scale.
- Flammability class: Cfl - s1 according to PN-EN 13501-1 standard. There is possibility to produce blocks with a flammability class B s1 d0.
- Tensile strength: 1.44 MPa acc. to DIN 53571
- Elongation at break: 96.57 % according to DIN 53571
- Standard size of the blocks is 1000x400x200mm, however it is possible to manufacture them in other sizes*.
- Weight (without filling): 30kg.

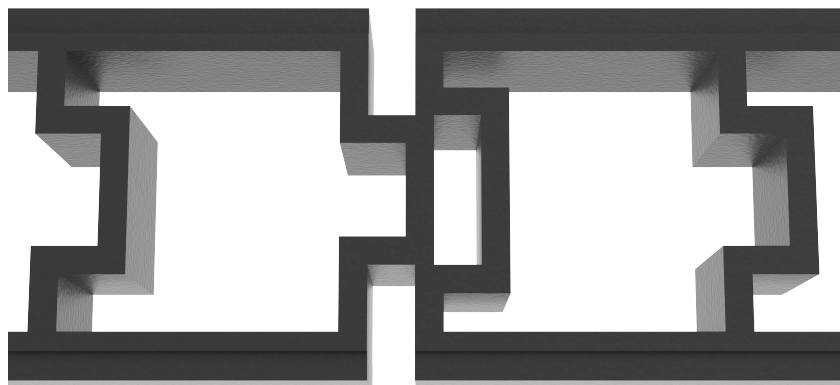
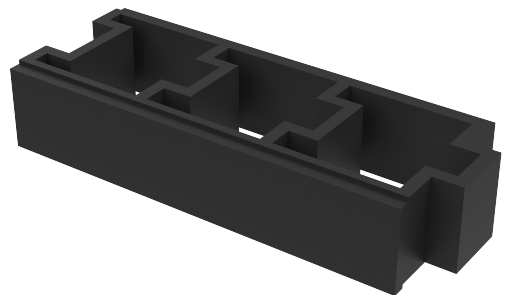
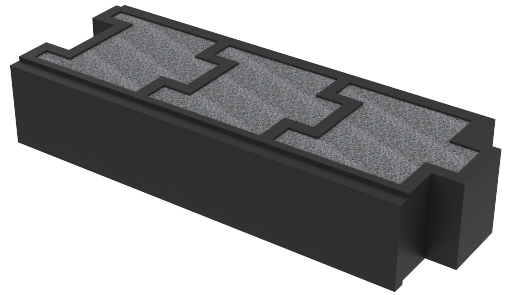
Product can be used at

- Outdoor shooting ranges.
- Indoor shooting ranges.
- CQB House tactical objects.
- Shooting&Tactical tracks.

Characteristics

- Bulletproof.
- Anti-ricochet.
- Noise and vibration dampening.
- Insulating.
- Weather resistant.
- Easy to keep clean.
- Easy to install.

dimension tolerance 1 %.



NOTE:

Ballistic blocks without mineral aggregate inlay do not constitute a bullet-proof barrier and may not be used on shooting ranges.

Ballistic blocks should be installed complete with mineral aggregate, on a previously prepared level base.