

MARS CONTAINER SHOOTING RANGE



Container shooting ranges manufactured by GISS are specially designed systems of mobile ballistic modules. The systems enable highly specialised training facilities to be built anywhere for the shooting and tactical training of all uniformed services as well as civilians.

These facilities allow the organisation of a range of training sessions at distances from 5 to 200 metres from a fixed and adjustable line of open fire.. The facilities have between two and eight shooting positions, allowing for individual, paired and group classes..



Modular Armored
Range System



giss.pl



Container shooting range

What is crucial with this type of training is the complete safety of the shooters. Both in the initial phase and with personnel already possessing advanced tactical and firearms skills, this is an extremely important element. It gives freedom to both trainees and instructors to organizing and carrying out classes. That is why we have placed great emphasis on safety in the container shooting ranges, using appropriate technology:

- The entire steel core is made of armored or abrasion-resistant steel (AR 500) a minimum thickness of 10mm to ensuring full safety.
- The training facility is fully protected with anti-ricochet panels installed using the method of “tongue-and-groove” with a thickness of min. 50 mm, protecting against steel elements from bullets and steel core.
- Clear and permanent marking of permitted and prohibited zones is provided.
- We have a certificate confirming that the ballistic panel can withstand the firing of 1 500 bullets into a 300mm diameter circle from a distance of 3 meters.
- We have certificates confirming that the steel used can withstand 12-fold firing of a 7.62x54Rmm caliber bullet with an LPS bullet with an initial energy of about 3600J at one point from a distance of 6m.

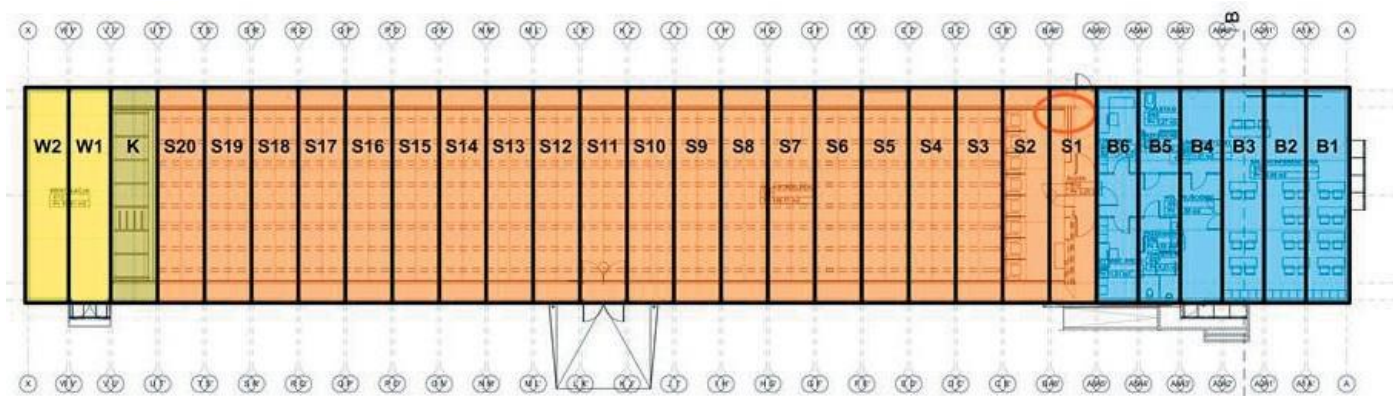
Through the use of regular equipment and live ammunition in training, the level of reality of training is increased, concentration and confidence of acquired skills is enhanced. Training support systems installed inside enable comprehensive analysis of training, identification of individual and group mistakes, which realistically allows to avoid them in the future both during training and during combat operations.

Systems that can be used to make training more interesting:

- Artificial smoke system, allowing training in conditions of limited visibility.
- Audio system - generating sounds of the battlefield.
- Monitoring system for trainees.
- Specialized simulation lighting system.
- Target retrieval systems.
- Lifter-turner system, or system-integrated steel targets.
- Integrated bullet traps system.
- Bullet walls system with connectors allowing to create rooms and provide tactical training.
- Multimedia shooting trainer.



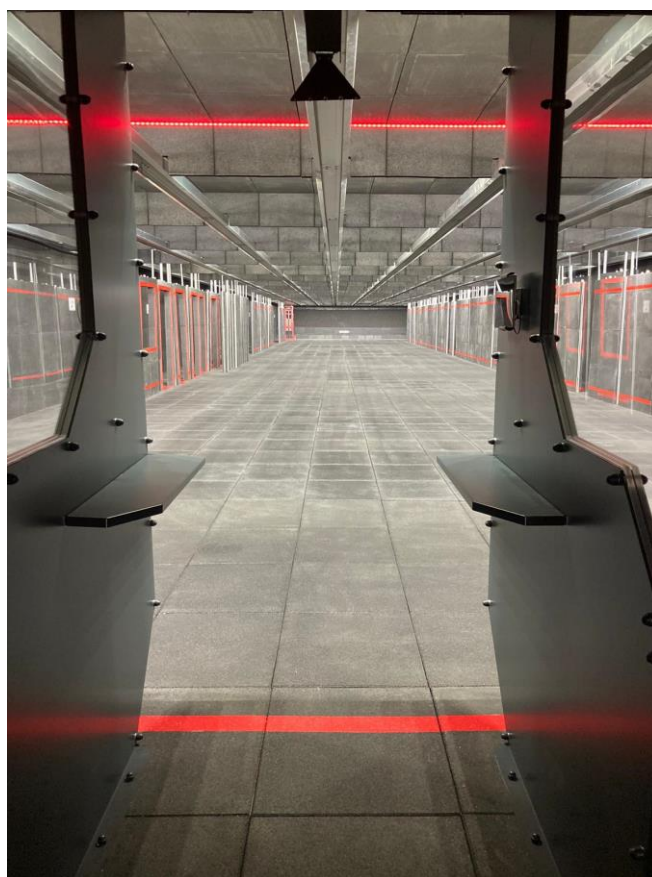
Besides the ballistic modules, the facility can also be equipped with modules supporting the operation of the entire center, i.e. training, office, social, logistics, communication modules. These can include, among others, such rooms as shooting control station, weapons cleaning room, toilet, training room, waiting room, locker room, medical point.



W2-W1- ventilation containers; K - bullet trap container, S20-S1- shooting hall containers; B5-B1 - office containers

What makes our facility special?

- The facility is tailored to individual user needs.
- We do design according to the user's requirements.
- Professional construction of the facility in a short time.
- Installation of the above mentioned training support systems.
- Possibility of constructing the facility in any place indicated by the user.
- Long-term guarantee for the built facilities.
- Warranty and post-warranty service.
- Service and supply of spare parts.
- Maintenance and service training.
- Experienced instructors.
- Possibility of creating "killing house" type rooms.
- Possibility to build a facility from 2 to 8 stands.
- Possibility of constructing a facility with firing axis from 5 to 200 meters.
- Possibility of using the bullet trap filled with granules or any other type of solution such as: block bullet trap, lamellar bullet trap or only lined with panels for shooting with 9 mm bullets.
- Modular module construction, allowing to design a facility of any width (2-8 stands) and length (5-200 m shooting axis).
- Possibility to use live ammunition.
 - 9mm Parabellum
 - 5,56 x 45mm SS109
 - 7,62x51mm NATO
 - 7,62 x 54R
 - 12/70





- Possibility of installing training support systems (smoke, audio, monitoring systems, etc.).
- In the case of equipping the facility with portable bullet walls, the possibility of conducting fire in the range of 180° even to 360°.
- Making the core from the highest quality armored or abrasion-resistant steel (AR 500).
- The possibility of making the facility using ballistic blocks to improve the comfort of use and increase the strength of the sidewalls when firing in 3 directions.
- The use of a high-quality ventilation system to ensure the comfort of the shooting range (min. 20 exchanges /1h).
- For demanding shooting ranges and large surface areas, we use air ducts inside the shooting range, but it is also possible to install the ducts on the roof of the range.
- It is possible to build a shooting range of KH or SH type with a movable set of ballistic walls connected by connectors of the same ballistic strength as the walls, ensuring full safety of shooters in the rooms.
- It is possible to dismantle the shooting range and install it in another place.

