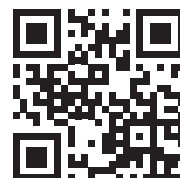


CQB House



The armoured CQBHouse manufactured by GISS is a specially designed system of portable ballistic panels allowing life-sized training facility to be built. This allows tactical trainings to be organized in conditions most similar to those prevailing on a modern battlefield.



giss.pl

V01/02.2021

CQB House – Armoured Close Quarters Battle House

It allows a wide spectrum of live fire training to be undertaken in preparation for the following types of operation:

- Military Operations in Urban Terrain - MOUT.
- Close Quarters Battle - CQB.
- Hostage Rescue Operation - HR.
- Counterterrorism - CT.
- Special Reconnaissance – SR.
- Direct Action – DA.
- Personal Security Detachment - PSD.

The sense of security while training, both in the initial phase and with personnel already possessing advanced tactical-firing skills, is a very important element. It gives freedom to both trainees and instructors in organising and conducting training.



This is why in the CQBHouse system we put great emphasis on safety, by using appropriate technology and obtaining certificates from the Military Institute of Armament Technology.

- The entire steel core is made of armour or wear-resistant steel for complete safety.
- The training facility is fully protected with anti-ricochet panels to prevent steel elements coming from bullets and the steel core.
- We provide clear and permanent signage for permitted and prohibited areas.
- We have a certificate confirming that the ballistic panel can withstand the firing of 1,500 bullets into a 300mm diameter circle from a distance of 3m.
- We have a certificate confirming that the corner in use can withstand the firing of 7 bullets at one point from a distance of 10m.

Due to the use of standard equipment and live ammunition in training, the level of real training increases, offering better

concentration and assuring confidence in the acquired skills. Internally installed training support systems enable comprehensive analysis of training and identification of individual and group mistakes, helping to avoid them in the future during training and combat operations.

In addition to comprehensive preparation for the implementation of the above-mentioned operations, by using the appropriate elements the CQB House also allows basic skills to be improved, such as situational shooting or even breaching, without exposing trainees to the danger of loss of health or life.

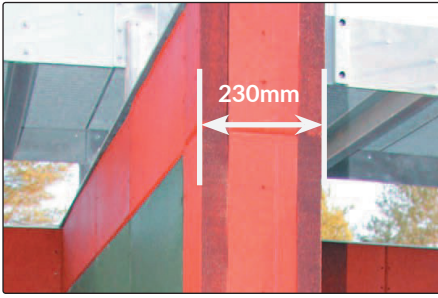


Systems that can be used to make training more attractive:

- Artificial smoke system to allow training in conditions of limited visibility.
- Audio system - generating sounds of the battlefield.
- Monitoring system for training participants.
- Specialised simulation lighting system.
- System of mobile targets.
- System of integrated bullet-traps.



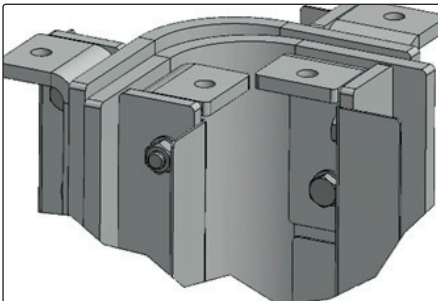
Key product features



Real wall thickness
(230mm when firing
on both sides).



Any room layout, from
a bank to a house or
an office.



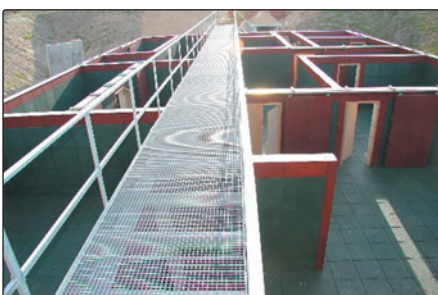
Patented armoured
steel corner.



System of shutters
to ensure rapid
reconfiguration
of the facility.



Roof directly
supported by the
building
structure.



Footbridge for
instructors supervising
training sessions.

What distinguishes our facility?

- The facility is tailored to an individual user's needs.
- We design it according to the user's requirements.
- Professional setup of the facility in a short time.
- Installation of the mentioned training support systems.
- Long-term warranty for the facilities built by us.
- Warranty and post-warranty repair service.
- Service and spare parts supply.
- CQBHouse maintenance and service training.
- Experienced team of instructors.
- Real wall thickness (230mm when firing from both sides).
- Modular construction, that allows designing a facility with any room configuration.

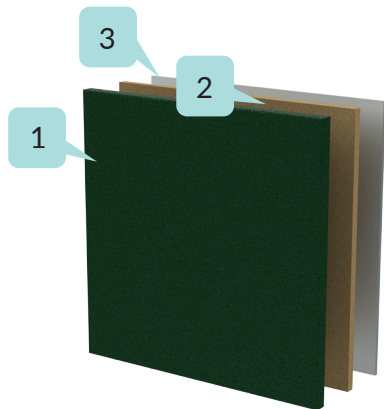


- Ability to fire at a range of 360°.
- Possibility of using live ammunition: 9mm Parabellum, 5.56 x 45mm SS109, 7.62 x 51mm NATO, 12/70.
- Possibility of using explosive charges.
- Ability to install training support systems (e.g., audio smoke, monitoring systems, etc.).
- The execution of the core from the highest quality armoured or wear-resistant steel.
- Possibility of constructing a facility with several floors.
- Possibility of making a catwalk for instructors.
- Possibility of building an armoured/wear-resistant steel roof.
- Possibility to construct a facility with the use of ballistic blocks to improve user comfort.

Types of offered CQB House solutions

Anti-ricochet wall with air/granite space

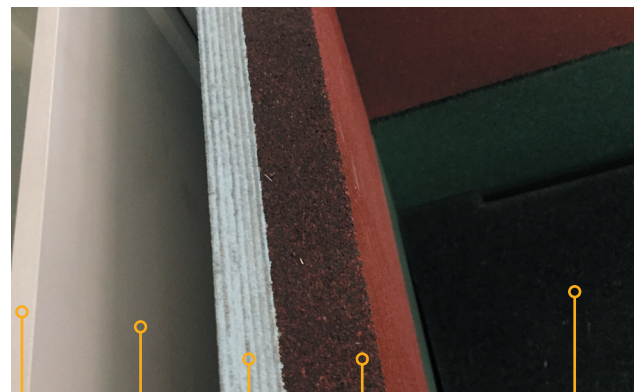
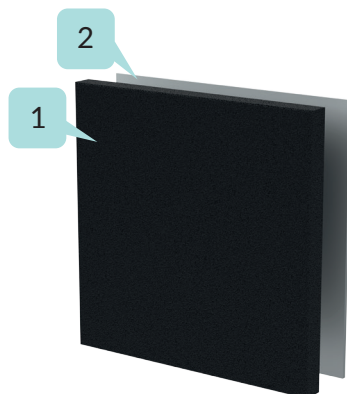
1. Anti-ricochet ballistic panels - 30mm
2. Plywood - 20mm
3. Armoured steel plate - 10mm



Ballistic rubber block

Anti-ricochet panel glued directly to steel plate.

1. Anti-ricochet ballistic panels - 50mm
2. Armoured steel plate - 10mm



Armoured plate

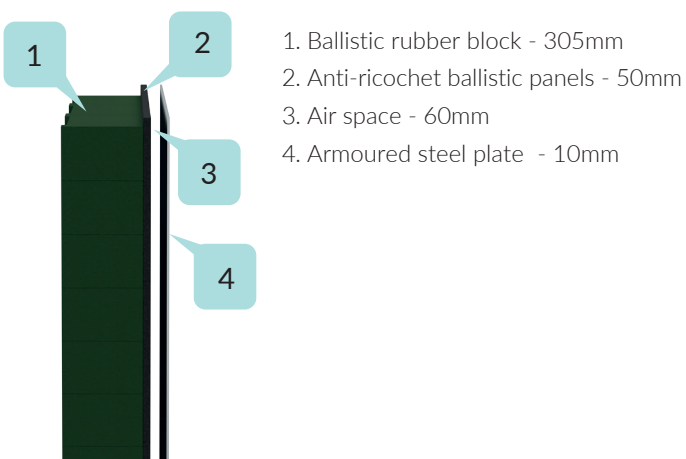
Plywood

Ballistic rubber block

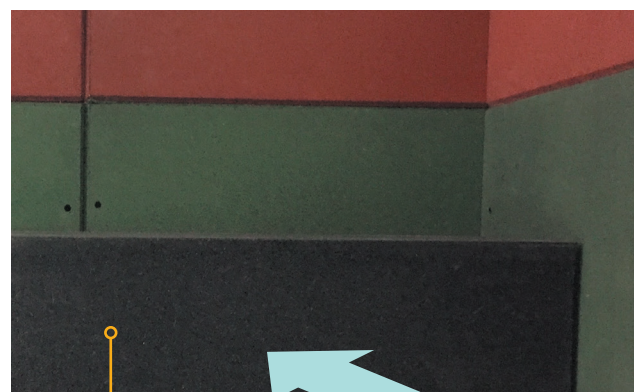
Air space
- inspection

Anti-ricochet
ballistic panels

Bullet wall with ballistic blocks



1. Ballistic rubber block - 305mm
2. Anti-ricochet ballistic panels - 50mm
3. Air space - 60mm
4. Armoured steel plate - 10mm



Ballistic rubber block

Firing direction