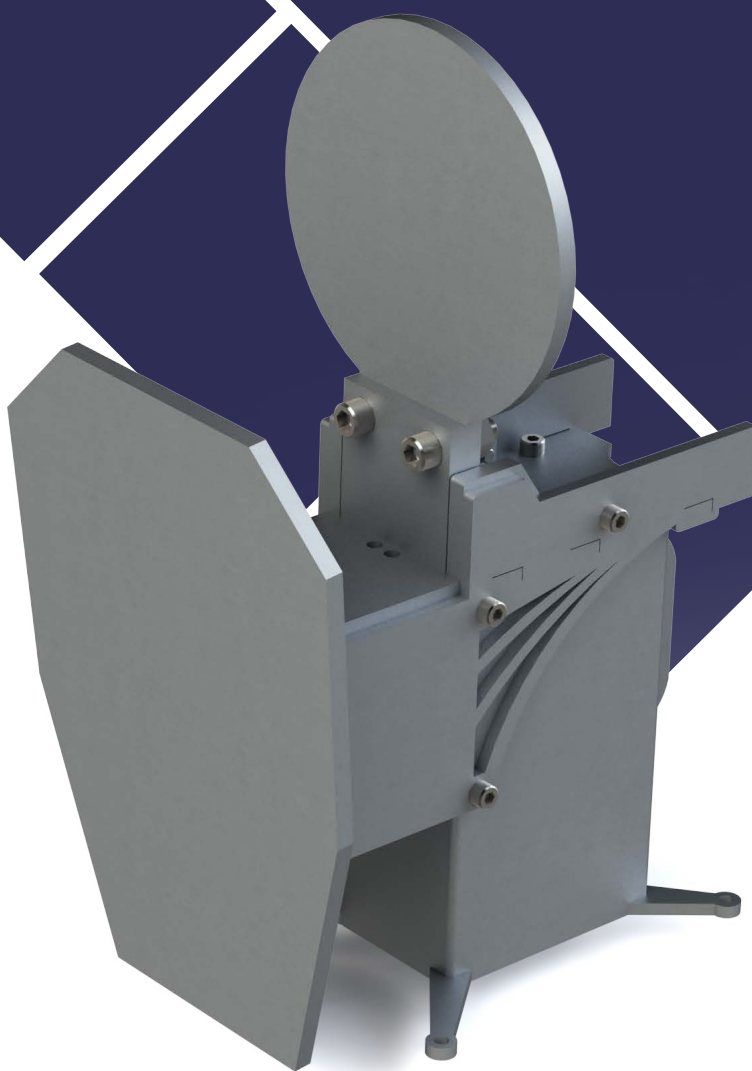
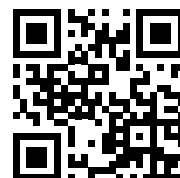


# ELECTRICALLY DRIVEN PORTABLE STEEL TARGET SYSTEM



The portable system of electrically-powered steel targets is an autonomous set of targets that can be randomly set in any place. It is the perfect solution for conducting a wide spectrum of training shooting drills, especially dynamic ones. The system allows shooter's skills to be verified very quickly, improving their motor skills, too.

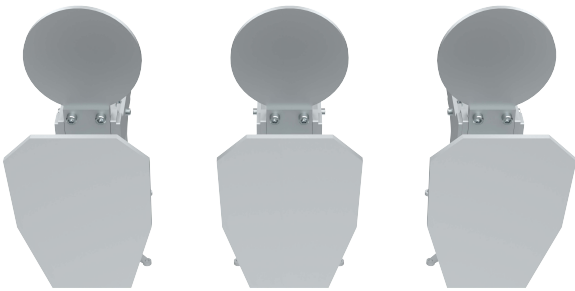


## Electrically driven portable steel target system

Wireless control allows all targets to be controlled at once, a group of targets or each target separately. In automatic mode, the system allows the time after which the hit "head" is automatically raised to be specified, while in a manual mode it is possible to raise it using the remote control.

The "head" moves in a range of 90 degrees. During night shooting, it is possible to equip the system with automatic lighting of the raised "head" in visible or night-vision mode.

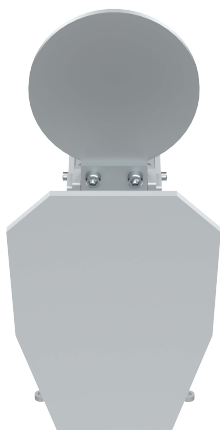
The electrically-powered targets are operated using a battery, which makes them completely mobile. The battery can be easily dismantled, charged and installed on a target.



It is possible to extend the range of target control and use a target base on different levels. The system is characterised by simplicity of use and multiple possibilities in preparing the target field due to the low weight and dimensions of the system.

### The kit includes

- 7 steel targets.
- Power supply batteries.
- Battery charger.
- Wireless remote control.



## Product features

- The targets' electric drive enables their wireless use.
- The targets' different arrangement possibilities allows new shooting scenarios to be regular set up in a very short time.
- The size and weight of the targets allows them to be carried freely by anyone.
- Battery life allows the "head" of the target to be raised on a single charge a minimum of 4,000 times.
- Due to the use of extremely durable materials, in particular AR500 or AR550 steel (Hardstal), shooting with 5,56mm caliber, M855 one target can withstand over 5,000 shots.
- Easily disassembled product components entail quick replacement by anyone.
- Due to high flexibility in the introduction of various functionalities, it is possible to adapt the system to the customer's needs, for example, by adding a night vision module.

## Main technical parameters of the system

- Made of high quality steel AR500 or AR550 (Hardstal).
- Supply voltage: 18V.
- Number of "head" raisings of one target on one battery charge: min. 4,000 times.
- Maximum "head" lifting time: 0.5 s.
- Temperature range: -20 to +40°C.
- Control range: 200m.
- Total weight of one target: 20kg ±1kg.
- Dimensions:
  - 42cm with the "head" raised.
  - 26cm with the "head" lowered.

